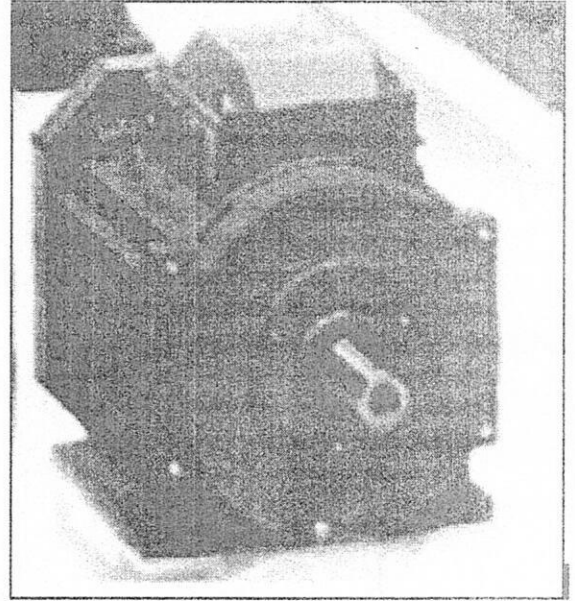
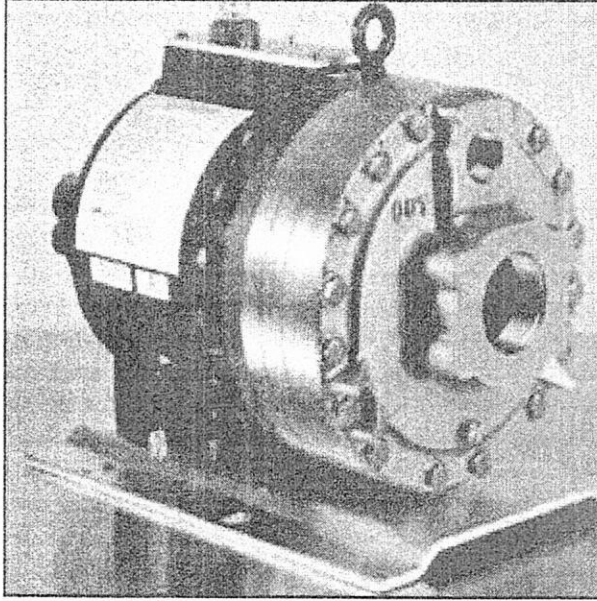
 <p>ANADOLU DENİZ İNŞAAT KIZAKLARI SANAYİ VE TİCARET A.Ş. ALYANS GEMİ KİRALAMA VE DENİZCİLİK A.Ş. ORTAK GİRİŞİMİ</p>	<p>TERS OZMOZ SİSTEMİ TEKNİK DOKÜMANI</p> <p>Teknik Tanıtım Bölüm-1</p>	<p>Doküman No : 699-LST00-8564-002-117-0</p> <p>Yayın Tarihi : 01 Şubat 2017</p> <p>Gizlilik Derecesi : Hizmete Özel</p>
---	---	--

1.3 YÜKSEK BASINÇ POMPASI



Şekil 1-3 - Yüksek basınç pompası ve Elektrik motoru Resimi

1.3.1 YÜKSEK BASINÇ POMPASI GENEL ÖZELLİKLERİ

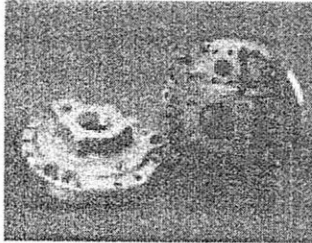
YÜKSEK BASINÇ POMPASI GENEL ÖZELLİKLERİ	
İmalatçı Firma	WANNER ENGINEERING INC
İmalatçı Firma Adresi	1204 Chestnut Avenue, Minneapolis, MN 55403 Tel: (612) 332-5681 Fax: (612) 332-6937 TOLL-FREE FAX [US only]: (800) 332-6812 www.hydra-cell.com email: sales@wannereng.com
İmalatçı Firma Kodu(NCAGE)	59776
Model no	G35XKSGHFEHH

Tablo 1.5 - Yüksek Basınç Pompası Genel Özellikleri

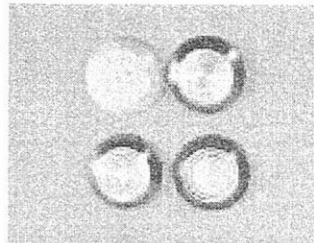
D/G-35 Series Options

Materials of Construction

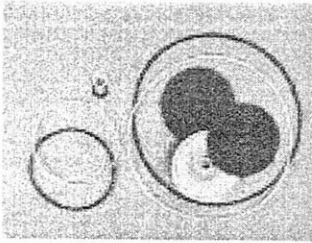
Hydra-Cell pumps are manufactured in a variety of heavy-duty materials to meet specific pumping needs. Refer to the design section for more information on appropriate material selection and chemical compatibility. Other customized materials are available by special order. Contact factory application engineering department for further information.



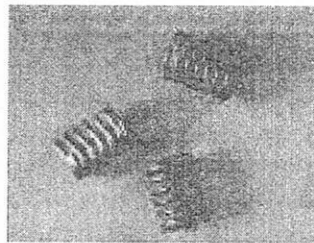
Pumping Head
 316 Stainless Steel
 Brass
 Ductile Iron, Nickel Plated
 Nickel Alloy (Hastelloy
 CW12MW)



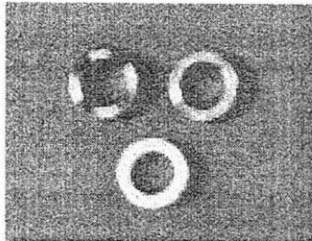
Valves
 17-4 PH Stainless Steel
 Ceramic
 Hastelloy® C
 Nitronic 50
 Tungsten Carbide



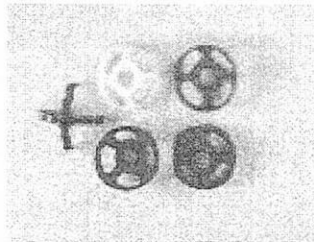
Diaphragms & O-rings
 Buna-N-XS
 EPDM
 Neoprene
 Teflon®
 Viton®-XT



Valve Springs
 17-7 PH Stainless Steel
 Elgiloy®
 Hastelloy® C



Valve Seats
 17-4 PH Stainless Steel
 Ceramic
 Hastelloy® C
 Nitronic 50
 Tungsten Carbide



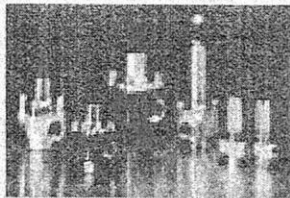
Valve Spring Retainers
 17-7 PH Stainless Steel
 Celcon®
 Hastelloy® C
 Kynar®
 Nylon (Zytel®)
 Polypropylene

D/G-35 Series Accessories

Options, Accessories and Custom Designs

See the Accessories Section for complete information on these other products:

- Valves
- Baseplates
- Guards
- Couplings
- Hose Connectors
- Hydra-Oil
- Oil Cooler and Filtering System
- Oil Reservoir
- Tool Kits



ANSI Flange Pump Heads

The D-35 Hydra-Cell can be equipped with ANSI flange pump heads for critical performance applications such as oil/gas installations and chemical process facilities.

Design Features

- 316 stainless steel flanges
- Optional ductile iron pump housing
- 2-1/2" x 150# ANSI pipe flange inlet;
 1-1/4" x 600# ANSI pipe flange outlet

Ordering Information

Contact factory for complete specifications and ordering information.

D/G-35 Series How To Order

Ordering Information A complete model number contains 12 digits of customer-specified design options: for example D35XRBTHECA

1	2	3	4	5	6	7	8	9	10	11	12
G	3	5	X	K	S	G	H	F	E	H	H

Digit	Order Code	Description
1-3		Pump Configuration
	D35	Shaft-driven (NPT ports or SAE Flange)
	G35	Shaft-driven (BSPT ports)
4		Hydraulic End Cam
	X	Max 37 gpm (140 lpm) @ 1050 rpm
	E	Max 35 gpm (132 lpm) @ 1150 rpm
5		Pump Head Version
	K	Kel-Cell Threaded Ports Version Pump Head
	E	Kel-Cell SAE Flange Version Pump Head
6		Pump Head Material
	B	Brass
	C	Cast Iron (nickel plated)
	S	316 Stainless Steel
	T	Nickel Alloy (Hastelloy® CW12MW)
7		Diaphragm & O-ring Material
	E	EPDM (requires EPDM-compatible oil – Digit 12 oil code C or D)
	G	Viton®-XT
	J*	Teflon® (available with E cam only; 1050 rpm max)
	P	Neoprene
	T	Buna-N-XS
8		Valve Seat Material
	C	Ceramic
	D	Tungsten Carbide
	H	17-4 PH Stainless Steel
	N	Nitronic 50
	T	Hastelloy® C
9		Valve Material
	C	Ceramic
	D	Tungsten Carbide
	F	17-4 PH Stainless Steel – Machined
	N	Nitronic 50
	T	Hastelloy® C
10		Valve Springs
	E	Elgiloy®
	H	17-7 PH Stainless Steel
	T	Hastelloy® C

Digit	Order Code	Description
11		Valve Spring Retainers
	C	Celcon
	H	17-7 PH Stainless Steel
	M	Kynar®
	P	Polypropylene
	T	Hastelloy® C
	Y	Nylon (Zytel)
12		Hydra-Oil
	A	10W30 standard duty oil
	B	40-wt for continuous duty (use with 316 SST or Hastelloy® pump head)
	D	40-wt high-temp EPDM-compatible oil
	F	40-wt high-temp food-contact oil
	G	5W30 cold-temp severe duty oil
	H	15W50 high-temp severe duty synthetic oil

Replacement Hydraulic End Assembly

Complete D/G-35 Hydraulic End Assemblies are available as replacement items. The Hydraulic End contains all drive end components from the drive shaft up to and including the diaphragms. All Hydraulic Ends are factory tested and shipped with oil. To order a Replacement Hydraulic End, specify the desired Cam (Digit 4), the Diaphragm and O-ring Material (Digit 7), and the Hydra-Oil (Digit 12).

Part Number*

D35 4' XX 7' XXXX 12' **G35** 4' XX 7' XXXX 12'

* Order Code Digits 4, 7 and 12 must be filled in when ordering.

* May require pressurized inlet.

EK'B : "G35XKSGHFEHH" MODEL İÇİN ONR.KİTİ MALZEME LİSTESİ

"G35XKSGHFEHH" MODEL NUMARASI İLE GÖRÜLEN YÜKSEK BASINÇ TULUMBASININ ONR. KİTİNE AİT MALZEME LİSTESİ.

SIRA	RESİM İÇİ NU	MALZEME ADI	MALZEME TÜRKÇE ADI	DB	KİT İÇİ ADET
1	5	O-RING	O-RING	EA	5
2	6	O-RING	O-RING	EA	1
3	7	O-RING	O-RING	EA	1
4	8	WASHER, DAMPENING	PUL	EA	10
5	9	O-RING	O-RING	EA	10
6	10	SEAT, VALVE	YUVA, VALF	EA	10
7	11	VALVE, POPPET, HYDRAU	VALF	EA	10
8	12	SPRING, HELICAL, COMP	YAY	EA	10
9	13	SEAL, PLAIN	KECE	EA	10
10	14	RETAINER, VALVE SPRING	YUVA YATAK, TULUMBA	EA	10
11	19	O-RING	O-RING	EA	5
12	21	DIAPHRAGM, ACTUATOR	DIYAFRAM	EA	5