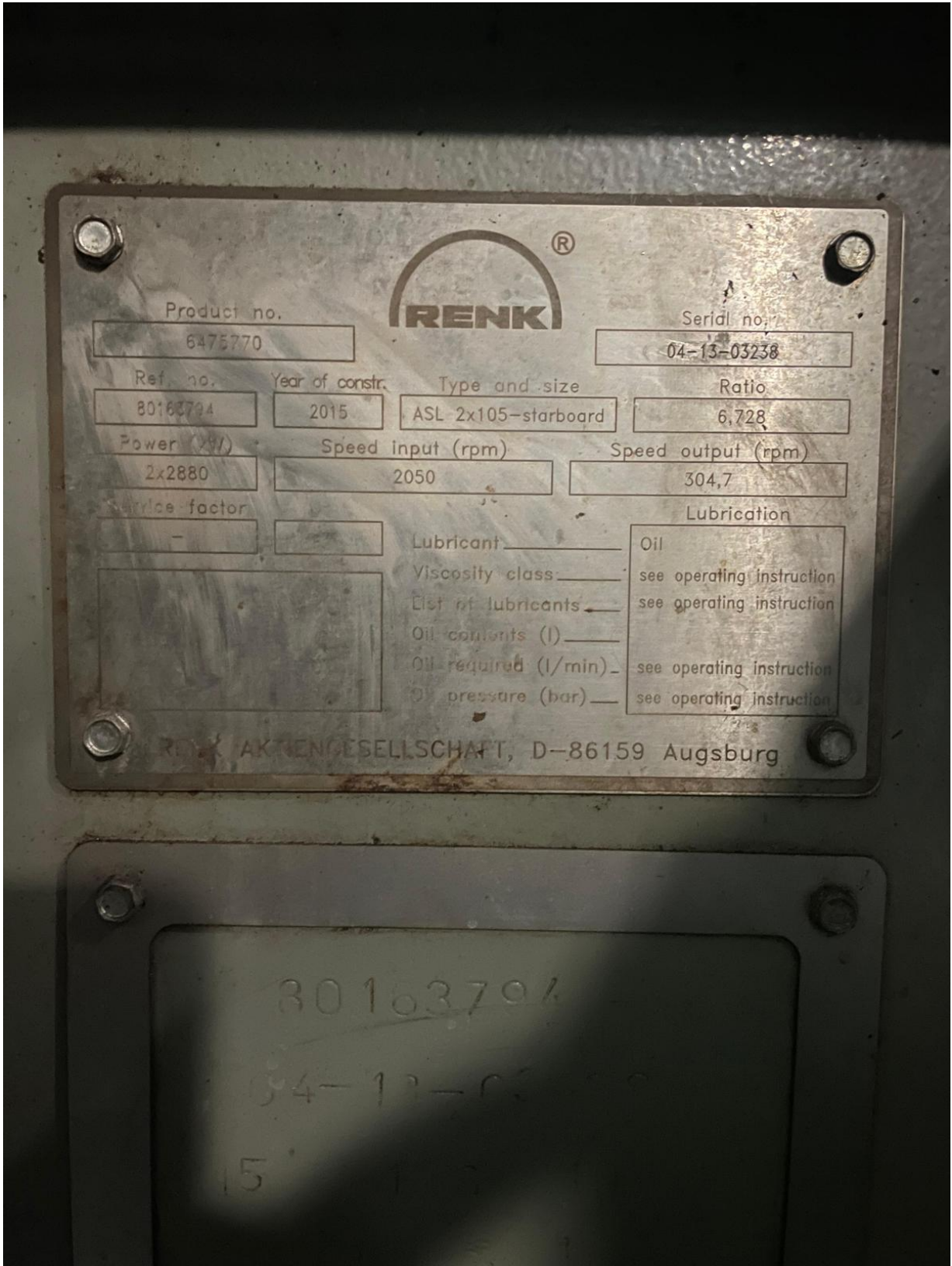


26-G31-00/ ITEM 90

Malzemenin kullanıldığı manevra iticisinin görseli aşağıda paylaşılmıştır.

The photos of the bow/stern Thruster that materail used in is below.





Product no.

6475771

Serial no.

04-13-03239

Ref. no.

80163794

Year of constr.

2015

Type and size

ASL 2x110-p

Ratio

6,728

Power (kW)

2x2880

Speed input (rpm)

2050

Speed output (rpm)

304,7

Service factor

-

-

Lubricant

Viscosity class

List of lubricants

Oil contents (l)

Oil required (l/min)

Oil pressure (bar)

Lubrication

Operating instruction

Operating instruction

Operating instruction

Operating instruction

RENK AKTIENGESELLSCHAFT, D-86151 Augsburg